



# THE PITTSBURGH LUTHERAN

VOL 100, NO 5, June 2021

PALM News	1-4
Campus Ministry	5-8
Mission News	9-11
Church Focus Series	12-15
School News	16-18
Congregation News	19-23
Special Events	24-26
Concordia News	27

## PALM DEVOTION

by The Reverend Dr. Douglas H. Spittel, President,  
Pittsburgh Area Lutheran Ministries

### “Our Highest Vocation and Privilege”

*“Then the eleven disciples went away into Galilee, to the mountain which Jesus had appointed for them. When they saw Him, they worshiped Him; but some doubted. And Jesus came and spoke to them, saying, “All authority has been given to Me in heaven and on earth. Go therefore and make disciples of all the nations, baptizing them in the name of the Father and of the Son and of the Holy Spirit, teaching them to observe all things that I have commanded you; and lo, I am with you always, even to the end of the age.” Amen. (St. Matthew 28:16-20)*



These are some of the last words that Jesus said to his disciples before ascending to the right hand of the Father. Often referred to as “The Great Commission,” these five verses are packed with nuance, power, and promise. Foremost is the last sentence in which Jesus tells the apostles to make disciples. An imperative verb, “make disciples” carries the connotation of a command. But this command is quickly softened with the verbs “wash” and “teach” which indicate not a making by force but by inclusion.

This commission is given to the small, select group of the eleven disciples. Alongside the giving of the Holy Spirit to them in the upper room of John chapter twenty, this is a commissioning of the apostolic ministry. Yet the Holy Ministry is not a limiting factor – the commission to make disciples of all nations clearly having larger implications beyond the foundational ministry of the apostles.

The commission to make disciples is directly connected to Jesus’ ministry that began with his call to the disciples to “Follow Me” now continued in the commission for them to “make disciples.” The men commissioned on this mountain are representative of all Christians. They have followed Jesus to this place. They have been taught by Him, seen his suffering and death, and witnessed His resurrection. Some “worshipped Him” and yet still “some doubted.” This is a commission that does not rely on our faith or good works. It is rooted in Jesus’ promise that “I am with you always, even to the end of the age.” Like the first blessing of God for Adam and Eve to *be fruitful and multiply* (Genesis 1:28) to fill the earth with His creation, Jesus gives this last blessing to *make disciples* to fill earth and heaven with His redeemed. This is God’s work, and we are privileged to participate in it as His agents.

Giving a witness to our salvation in the death and resurrection of Jesus, inviting our neighbors to hear God’s Word with us, teaching Biblical truths with simple words and acts of mercy, this is our calling as baptized disciples of Jesus. Sponsoring young and old as they hear God’s Word in the midst of His people and standing with them as they receive the gift of Holy Baptism is the very essence of being the Church. The Church is by her very nature missionary. Support and participate in that mission in your congregation and through the missionary efforts of mission church plants and missionary outposts. Encouraging brothers and sisters, friends and strangers, and all of your neighbors to gather together with your pastor as the flock of the Good Shepherd is living the life of discipleship. This is our calling, our privilege, and our life in Christ Jesus.

**Pittsburgh Area Lutheran Schools and Lutheran Homeschoolers**

*by Rev'd Brian P. Westgate, Lutheran Education Director*

The Board of Pittsburgh Area Lutheran Ministries includes various representative seats. One of those seats is the Lutheran Education Director seat. That seat is currently held by Rev'd Brian P. Westgate, pastor of Redeemer Lutheran Church & School in Oakmont/Penn Hills, English District Circuit Visitor for Pittsburgh, and PALM Secretary. The seat represents Pittsburgh Area Lutheran Schools and Lutheran Homeschoolers.

The homeschoolers are a new group, led by Mrs. Anna Mussmann, a rostered LCMS teacher. They meet monthly at First Trinity Church for fellowship, learning, and fun. We pray God would bless this new endeavor among us.

PALS, on the other hand, has been in existence for many years. Its primary function is to provide scholarships to students at our various Lutheran schools in western Pennsylvania. Currently Mr. Edward (Terry) Terhune IV from First Trinity is President of PALS; Mrs. Nancy Doman from Redeemer is Treasurer. Also on the Board are principals, teachers, and laity from Redeemer and St. Luke. Schools in the region include Redeemer (PreK at Oakmont, PreK-12 at Penn Hills [only LCMS high school in Pennsylvania]) and St. Luke Hannahstown (PreK-8).

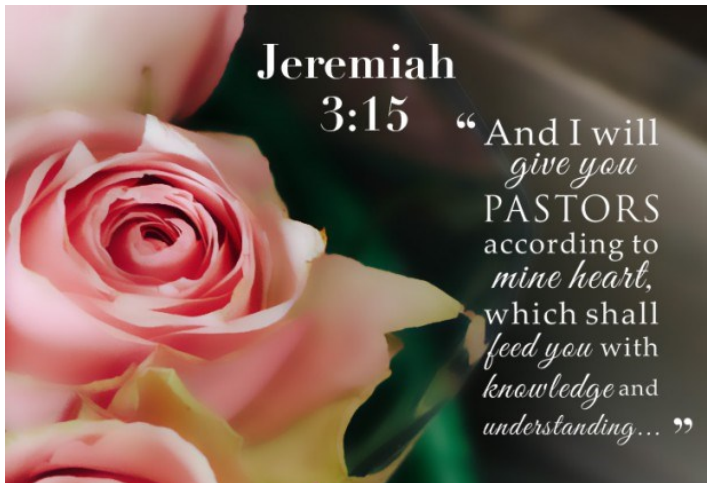
The following congregations have preschools: Calvary Murrysville, Good Shepherd Whitehall, Good Shepherd State College, Holy Trinity Albion, Prince of Peace Freedom, St. John's Millvale, St. John's Munson, and Zion Bridgeville. We pray God would bless our schools, their teachers, and their children. May they ever bring the Gospel to God's children to bring them life everlasting!



## Pastor Milestones

Three pastors in our Pittsburgh area are looking forward to milestones in their service to the ministry in May and June.

**Rev. Adam Thompson** was installed as the Pastor of Ascension in McCandless Twp. on Dec. 6, 2020. Before coming to Pittsburgh, he served a call in Fairlawn, OH as an Associate Pastor specializing in Family and Youth Ministry. Pastor Thompson was born into a Lutheran pastor's family in Mankato, Minnesota, his father served three churches during his childhood and adolescent years. Besides Minnesota, he lived in Monett and Imperial (St. Louis area), Missouri. He has an older sister and a younger brother. He attended Lutheran schools up through high school earning a Bachelor of Arts in Philosophy and Religion from Truman State University in Kirksville, Missouri and a Master of Divinity from Concordia Seminary in St. Louis in 2016 and ordained on May 20. He served as a Lutheran chaplain at a Boy Scout summer camp during his studies at the seminary and served his vicarage internship in Blacksburg, VA where he was the leader of a Lutheran campus ministry at Virginia Tech. He also spent one year abroad, studying at a sister Lutheran seminary in Oberursel, Germany. He enjoys coffee shop conversations, meeting people for lunch, reading, playing video and board games, hiking, watching sports, and playing tennis. He lives at Woodbridge in Ross Twp. with his dog, Tucker.



Also new to the area and celebrating his five-year anniversary of service in the ministry on June 12 is **Rev. Joshua Obermann**, installed at Calvary in Murrysville on March 14. Born in 1984 in Peoria, IL, he graduated from Concordia University Nebraska in 2011 and Concordia Seminary St Louis in 2016. He met his wife, Hannah at the University and the couple was married on Dec. 28, 2009. He completed his Vicarage at Bethlehem Lutheran Church in Jacksonville FL and was called to Grace Lutheran church St. Cloud FL until taking the call at Calvary. Pastor Josh and Hannah have two children. Rhett will turn 9 in April and Poppy is 6.

They have a mini-Australian Shepherd named Mango. As a family, they love spending time outside and are looking forward to hiking through and exploring the woods throughout Pennsylvania. He enjoys maintaining an aquarium in his office where he keeps various freshwater fish. German Blue Rams are his favorite.

**Rev. Stephen Niermann** has served Faith located first in Schenley Heights and currently on Lemington Avenue in East Liberty since 1991, fresh out of seminary. On June 23, he will celebrate 30 years of serving His Lord, devoted to this flock. He added the former St. Thomas in Northside congregation in 1993 and conducted a dual pastorship for the next 20 years in an effort to enable the church to keep the ministry going he recalled. A "fourth generation" minister, his great grandfather pastored in the "Holy Land" of Concordia, Missouri. The family migrated up the Mississippi from New Orleans. His grandfather was a district president and his father serviced congregations in Nebraska and Kansas. Pastor was raised in a small town near Omaha, one of five children. Two of his siblings are physicians. Thanks to the late Rev. Richard Grammes, former pastor at St. John's in Millvale and chaplain at Concordia, he was commissioned as an Air Force chaplain. Since 2006 he has also served as a chaplain for Heartland Hospice. "It's been a wonderful calling to minister to those who are dying," he said. "The single difficulty is the documentation."

MARK YOUR CALENDAR

June

6. Ordination and Installation of Pastor Elect Donn Woolweber, Zion Lutheran, Lawrenceville, 3:00p.m.

July

12. CLM Golf Classic, Treesdale Golf & Country Club Times TBA

12 to 15. Mystery Island Vacation Bible School (VBS) at Ascension Lutheran Church, McCandless, 6:00 p.m. to 7:30 p.m.

25. Concordia Annual 140 Summer Festival, Concordia at Cabot Campus, 12:30 p.m. to 5:30 p.m.

August

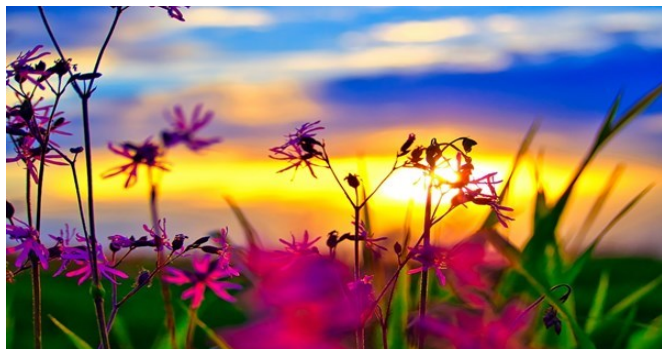
15. [Good Samaritan Hospice Drive-In Memorial Service and Butterfly Release Event](#), Mt. Zion Baptist Church - Lake Arthur, Mt. Zion Baptist Church Road, Franklin Township, PA, 2:00 p.m. to 4:00 p.m.

21. Good Samaritan Hospice Drive-In Memorial Service and Butterfly Release Event, Concordia at Villa St. Joseph, 1030 State St. Baden, PA 15005 [2:00 p.m. to 4:00 p.m.](#)

28. Concordia Hospice of Washington Butterfly Release, The Barn at Ike's Place, 80 Ike's Rd., Amity, PA 15311, 2:00 p.m. to 4:00 p.m.

October

23. Concordia Fashion Luncheon details TBA



**CALENDAR NOTE: DUE TO THE COVID-19 PANDEMIC PLEASE KEEP IN MIND THAT ANY OF THE SCHEDULED EVENTS MAY BE CANCELLED OR POSTPONED. PLEASE CONTACT YOUR LOCAL CHURCH FOR UPDATES.WE PRAY THAT ALL OF YOU ARE SAFE AND HEALTHY.**



**The Pittsburgh Lutheran**

**Published by**  
Pittsburgh Area Lutheran Ministries (PALM)

**Editors**  
Nancy Koester, Mary Lou Rilee,  
Megan Migyanko

The Pittsburgh Lutheran is published 10 times per year.

All inquiries, comments or suggestions should be addressed to the Editors at:  
[pittsburgh.lutheran.editor@gmail.com](mailto:pittsburgh.lutheran.editor@gmail.com).

**Please mail PALM donations to:**  
Pittsburgh Area Lutheran Ministries  
Attn: Treasurer  
535 N. Neville Street  
Pittsburgh, PA 15213

**PALM Officers**  
Rev. Douglas Spittel, President  
Justin Spittel, Treasurer  
Rev. Brian Westgate, Secretary

**PALM Website**  
<http://www.palmpa.org>

## CAMPUS MINISTRY

### SRU CAMPUS MINISTRY

*by Augusta R. Mennell, Campus Ministry Director*

#### Campus Ministry Work at All Saints Lutheran Church and Student Center

God has sent thousands of college students to universities and colleges like Slippery Rock University, Grove City College, and Westminster College. Often American students as well as internationals are essentially unaware of the Gospel message, so the university scene is one of the most promising Gospel vineyards in America.

Almost all of the enormous number of international students who come to America speak English, so there is no need for us to learn a foreign language, obtain missionary training, and move to a foreign country in order to spread the Gospel. All we need to do is open our lives and our hearts and internationals quickly come to understand that we care about them.

Ever since All Saints Lutheran Church and Student Center was founded in 1977, the congregation has had the goal of reaching out to students. From the beginning we helped welcome college students to worship in a friendly, accepting and welcoming atmosphere. We have held social gatherings meant specifically for the student, we provide transportation to shops, doctors and bus stations, and we make the Campus Ministry Director available to talk 24-7.

Although many internationals are at our colleges, few get to meet real Americans even though they would like to. At one time it was much easier to reach students, especially internationals. Twenty to thirty years ago international students had a lot less money than they have now. In those days they really needed trips to Walmart or to the thrift stores in Butler and in Grove city to buy warm jackets and blankets. They really needed the snacks like Ramen noodles that we stocked in our church kitchen to supplement their food needs. They very much appreciated the photographs we took so they could send them home. Almost no one had his own camera in those days.



Today we have to work harder to connect with students. Fortunately, many still welcome friendship, rides to visit the Amish, invitations to our home for Thanksgiving dinner and Christmas dinner. Most of all they appreciate the chance to discuss their beliefs and they will listen to our testimony about faith in Jesus as our Savior. They have more money, but they still enjoy what All Saints calls friendship evangelism.

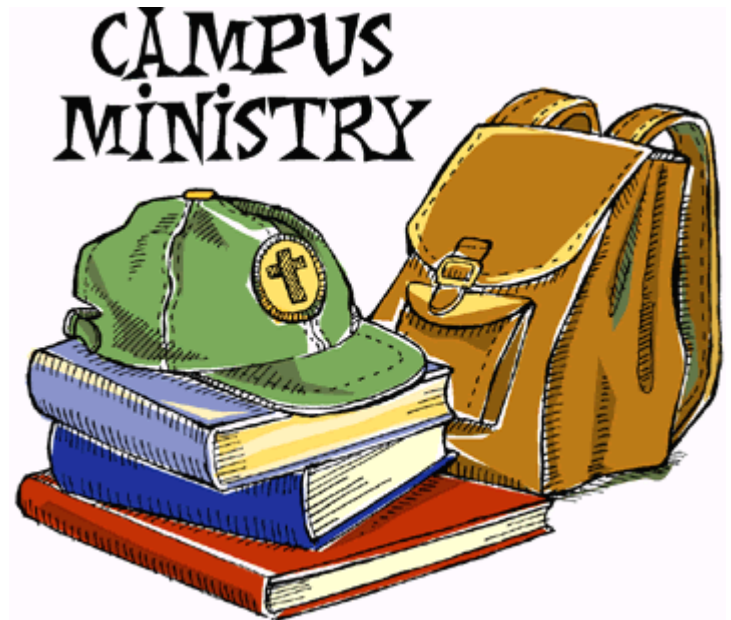
All Saints believes that responding to students, no matter where they are from, is a God-given opportunity to share the Gospel through friendship. If we don't tell, how will students know? Even American students need to be told because many don't know what Easter is about beyond Easter eggs and

chocolate bunnies. We share with students by hosting a free homemade meal once a month during the school year. It has become known as the Korean meal because it is cooked by a Korean Christian friend in our town. The students love the time to eat a great meal and visit one another in a relaxed atmosphere. We used to show a movie with the meal, but now students prefer time to visit. It was suggested that we use these meals as times to preach, but we don't. Instead we show what a Christian church is all about: God's love. These meals give us the chance to invite students to come to worship and the Bible classes.

## CAMPUS MINISTRY

### SRU CAMPUS CONTINUED

We openly say we are Christians and we'd love to share our faith. Some have come, talked, listened, studied, and become baptized Christians. This is our joy. No one has to have a PhD to be a friend to students. We do need a desire to lovingly share our friendship and faith. Anyone and everyone can do that. The result is a deep sense of satisfaction, though students might not respond by becoming Christians. We have great joy because we believe God will touch the planted seeds of faith and bring faith in time.



### REVIVE CAMPUS MINISTRY UPDATE

*by Matt Slaybaugh, Director of Revive Campus Ministry*

It has been another great year with Revive at Penn State! We are thankful that despite the challenges with the coronavirus that we were able to still do a lot together.

Our weekly Wednesday gatherings continued that consists of a homemade dinner, hang out, and bible study. In the fall we went through topics such as relationships, money, family, and adulting 101. This spring during Lent we went through a series on trials and temptations. The topics included control, knowledge, good things, status, and self-promotion. We have ended the semester talking about our Identity in Christ and Who God Says We Are. We have concluded the last month of the school year in April with many activities such as our student lunches after church, game nights, and outdoor activities such as hiking, biking, and time outside on campus grabbing lunch.

This year we are celebrating our three seniors graduating from Revive-- Rebecca, Elijah, and Doris. Our last weekly gathering we enjoyed sending them off with a time of recognition and a gift. Our student leaders and I are excited to begin transitioning to our plans for the summer and fall. We are excited that a handful of our students will remain in town over the summer to be able to stay even more connected.

## CAMPUS MINISTRY

### PITT CAMPUS MINISTRY- Lutheran Student Fellowship (LSF) & International Student Ministry (ISM)

535 N Neville St  
Pittsburgh, PA 15213

[www.LSFPgh.com](http://www.LSFPgh.com)

412-683-4121

Instagram: LSF\_Pittsburgh

Facebook: LSFofPGH



*"I share numerous meals with many students, often. Why? It helps build and sustain friendship and community. It is an opportunity to share joy in one another. Food and drink strengthen the mind and lubricate the tongue for wonderful conversation and dialogue. It assists in creating and expressing gratitude. Students need to eat (and so do !!). We Christians are called to hospitality, including to the stranger and the foreigner, the curious and the unbeliever." Pastor Andræ*

Our campus ministry pastor embodies this statement by Dietrich Bonhoeffer from *Life Together*, while he lives his own convictions expressed above. In the span of just a couple weeks recently, he made time to "break bread" with more than 10 people for fellowship around the table. At the beginning of the week, he visited with J.C. as he attended church and lunch. This self-proclaimed atheist has joined Pastor Andræ and a few others in reading Dorothy Sayer's *The Mind of the Maker* to explore an apologetic for the Trinity. Pastor Andræ also shared coffee with Pitt student Nate, known through the Beatrice Institute, who has grown from being an avowed atheist to being "not sure". Lunch with Vicar Hasselbrook and his wife Moira provided refreshment while reflecting on 10 months of shared ministry.

Sam is a Jewish student at Pitt with whom our pastor shared lunch to continue a friendship where discussion ranges from Jesus to Moses, music, literature, and much more. Brunch provided an opportunity to engage inactive Presbyterians and CMU students Seanna and Steven in conversation and provide them with devotional materials. Professor Andy Norman, an atheist, is a CMU professor and advisor to the Humanist League. Happy hour with him resulted in a friendly opportunity to barter the reading of a book of Pastor Andræ's choice in return for reading the professor's newly released book on "mental immunity".

Lunch with Sarah, an Anglican Pitt grad student, provided lively and edifying discussion about singing, liturgy, preaching, and much more. Local novelist and singer Kevin filled another meal hour with Pastor Andræ. This friendship of many years has led Kevin to leave the ranks of the de-churched and also eventually bless the homeless mission of our campus ministry with his skills. As you know, the homeless outreach was begun by one of our students a dozen years ago.

## CAMPUS MINISTRY

### PITT MINISTRY CONTINUED

Pittsburgh Theological Seminary (Presbyterian Church USA) student Rebecca, who counts Pastor Andræ as a spiritual mentor, has deepened her understanding of theology through exchange of ideas while breaking bread over a meal. Catechumen and former atheist Josie, a CMU senior, also met with Pastor Andrae for lunch and discussion just recently. To hear more about Josie's compelling story, see her [interview with Pastor Andræ here](#).

Each opportunity to meet with someone in the campus community over a meal provides just the right atmosphere for lively discussions on sports, music, literature, culture, politics, and many other topics, all leading to the chance to share the gospel and challenge sometimes lapsed and often nonexistent faith. It is a chance for each to experience Bonhoeffer's observance: "At table they know their Lord as the one who breaks bread for them; the eyes of their faith are opened."

Will you join us in prayer for each of these individuals? Also, please do take time to view [the video interview of Josie](#) who has such an inspiring testimony. It is these souls (and bodies!) who benefit from your campus ministry.



Finally, would you join us in providing our eight graduates this year with a hymnal, a *Lutheran Witness* magazine subscription, and a Study Bible? The cost per student is \$50 — a small investment that will bring great blessing!

During this pandemic, your campus mission is still serving the needs of students; God's work continues through your campus ministry, and *we need your support*.

Please, especially in these difficult times for us all, support the ministry financially. You can donate online: scroll about halfway down at <http://lsfpggh.com/donate/> OR for no-fee, secure giving, go to the NEW giving portal at <http://www.firsttrinity.net/donate/> and choose "Campus Ministry" from the drop-down menu (for recurring giving options, just follow the directions to sign up or contact me). You can also make checks out to First Trinity with "Campus Ministry" in the memo line, and mail to: Campus Mission, 535 N. Neville St., Pittsburgh, PA 15213.

If you are a Thrivent member, please contribute through Thrivent Choice to "Lutheran Student Fellowship of Pittsburgh, PA".

Also, if you have any *graduating high school seniors* who will attend college in the Pittsburgh area, or any current students in our schools, *please share their contact information with us* and ours with them. Even if they might be worshipping at their home congregation on Sundays, we would love to connect them with our community of students for Bible Study, social events, service projects, and overall peer and pastoral care & support!

**MOST IMPORTANTLY, PLEASE PRAY FOR US, AS WE DO IN GRATITUDE FOR YOU. THANK YOU!**



## LOCAL MISSION

### Mileposters News



Five youth riders (pictured) met with two adult captains and another parent at Citizens Park on Troy Hill, on April 11, kicking a ball around in a circle and picking dandelions; one of them, younger than the rest, tried to figure out what to do with a hula hoop. Three of those present were unchurched; witness to them has been ongoing.

Relaxed restrictions and an influx of tourists led to Puerto Rico's worst month of the pandemic so far in April. The island has lost many doctors and other health care personnel to better-paying, more comfortable positions on the mainland, so resources were stretched thin. Total mileage for the Mileposters 2021 Puerto Rico campaign to support LCMS ministry there, with 6 different riders so far, stands at 1297, over twice as many as at this time last year.

Rides prior to May 1 this year were affected by the shutdown of a heavily used portion of the Great Allegheny Passage, for a sanitary waste project between Boston, Milepost 19, and Buena Vista, 26 /27; also affected were Boston-Dead Man's Hollow and Buena Vista-Douglas Run. Extension of trips to West Newton and beyond was the main result--pictured is one to Banning #4 Mine on April 24. Both ends of the affected area are frequently used as starting points because of the availability of parking and other facilities. The trail site mentions that the new surface is still soft, which is usually a problem anyway when the spring rains come.



## LOCAL MISSION

### Holy Cross' Enhancement Project #2

by Vicar Silas Hasselbrook

The Jewish people in Jesus' time, and many still today, would wear small boxes that contained Scripture on their forehead and left arm. The support from this comes from two places. First, in Exodus 13, God commanded His people to recall at all times the salvific event He worked for them in the Exodus. The second place is in Deuteronomy 6, right after the Jewish creedal statement (the Shema), and Moses' reminder to the people to keep the laws and statutes of the LORD in the Promised Land they were about to possess. The important truths about God's salvation and identity were to not only be brought to mind, but placed right next to the mind physically on slips of paper.



While not exactly the same, I did have a box weighing on my mind. If I tried to tie it to my head, I would never be able to move around with it. After all, this box is 19 feet long, 7 feet high, 7 feet wide, and weighs 62,000 pounds.

In 2018, the directors of the Food and Clothing Distribution Center at Holy Cross, Walt and Ginger, purchased a storage container in order to keep out-of-season clothes in a dry and secure place until the appropriate season occurred. Right now, the winter clothes are going in there and the summer clothes are coming out. There are certainly not slips of Scripture that are contained in this box. But it is a constant reminder of the large amount of people we clothe and the vast variety of good-quality clothes with which we seek to provide them.

But Walt and Ginger both agreed that it was something of an eyesore. In fact, neighbors of the church concurred and approached me about doing something to beautify it. The storage container is made out of steel and parts of it

are Corten steel (the metal that forms the UPMC building downtown and many city-park Sculptures). Corten steel is designed to rust. And that is a problem when it comes to applying paint.

I got in contact with a local Hazelwood artist, Edith, who heads up the local group Arts Excursions Unlimited. Edith and her group facilitated the design and painting of the Elizabeth Street bridge mural, the steps leading up to the community garden by the old YMCA, and the various metal artwork and statues around the neighborhood, such as the bird at Burgwin School and the flowers by another local garden outlet.



## LOCAL MISSION

### Holy Cross Mission Continued

Between the two of us, we researched what we would need to do in order to make the sea container more appealing to the eyes. After asking various neighbors and church members, the color of forest green was decided upon. However, we needed primer and paint that would adhere to the container and could withstand the weather. We obtained a grey primer and a forest green paint latex paint that could do just that. Before we started the project, we used wire brushes (both on the end of wooden handles and drills, but quickly discovered the drills to be much more effective!) to remove the rust and smooth the surface of the container as best as possible.

The most difficult process was preparing the surface for painting. For 4 Sunday afternoons, Edith came with some volunteers connected with her group, in addition to me and my wife, and we finished 2 of the 5 sides. My wonderful wife assisted me in applying two coats of grey primer followed by two coats of green paint to those two sides of the container. You can see the difference it has already made. In fact, when we put the primer on, we just stood in front of it for a few minutes and admired it like some kind of beautiful steel sunset. As we were applying the paint, multiple residents commented on how nice it looked, and Walt and Ginger were beyond pleased.

We still have 3 faces to prepare, prime, and paint. I have made it my personal project and goal for it to be done before my vicarage is ended. And I believe it will be. Not only does cleaning up this box beautify our church, but it also beautifies our neighborhood. This is just another way Holy Cross can show forth care and love to our neighbors.



## Our Houses of Worship

By Shirley Freyer

### Faith Lutheran Church

Rev. Stephen Niermann, Pastor

One cannot help but think of Matthew 18:20 “For where two or three are gathered together in My name, I am there in the midst of them”. For members of Faith believe that the pandemic has increased attendance and allowed 90+ year-olds to participate even more. Or the retort from Joseph to his brothers, in Genesis 50:20 “But as for you, you meant evil against me; *but* God meant it for good, in order to bring it about as *it is* this day, to save many people alive.”

Their pastor for the past 30 years,

Rev. Stephen Niermann said, “God has brought our congregation together through phone worship. Not everyone has a computer so we can’t do ZOOM,” he explained.

The phone conferencing is free, and he claims they have more in attendance on the phone than they experienced for in-person worship. Members who have moved away and those who had fallen out of the habit of worshipping weekly dial in on Sunday morning at 10 and on Wednesday at noon for the prayer service.



During this time of social distancing the congregation has tightened its fellowship. Sheila Petite who joined the church after her marriage to life-long member Judge Oscar Petite, has taken on the production of a weekly bulletin - information that she sends to every member. Pastor said his flock looks forward to that connection and credits this outreach along with the work of the Holy Spirit for the addition of a new member.

Yes, it’s true that this current congregation of 30 has no church to call its own. But the journey is worth the telling. A woman named Mabel Jackson heard The Lutheran Hour on the radio and called in her interest in beginning a Lutheran Church in her neighborhood. She worked under the direction of St. Matthew’s in Northside and met at the YMCA on Centre Avenue in the Hill District. The group called Pastor Gerhardt Schroeder and moved to a house on Herron Avenue (pictured left). The Pope Family lived upstairs and as they grew in membership, the “famous beginning” opened a school. After a few years they purchased property and built the church on Ewart Drive in Schenley Heights in a community that was called Sugartop.



1954 (pictured left: Cornerstone Laying Celebration 1954)- the year Oscar Petite was born and his daddy, Oscar Sr. “stuck a shovel in the ground,” and local contractor Mr. Hunt laid the cornerstone. This lifelong member has stayed in the community, earned his law degree from Duquesne University and has been an elected official since 1995. He recounts a typical Sunday - his parents would send him and his brothers and sister in a jitney to Sunday School and join them at services. Afterwards, there was always a coffee hour when the men counted the collection and the women chatted. He was the little kid who complained about the men smoking

downstairs in the basement of the church and one of the culprits who forced the pastor to stop the service because of their disruption!

“I have never been to any other church,” he confessed. “This part of my life grounded me and has something to do with what I am today.”

He enjoyed remembering the many events at the church as a youngster - the Salad-rama, Outdoor Nativity, the Christmas and Easter programs (he can still recite his speech), church picnics at Luther Crest (Concordia at Cabot), Camp Pioneer and Winter Weekend in the Laurel Mountains.

And his wife of 30 years who recently retired as a supervisor in an Early Intervention Program for children from birth to age 3 recounted her service at Faith as lay leader for children’s sermons, a trustee and VBS teacher. “We held VBS until 2015 each year trying new models,” she said. “One year we met on a week-end; another year we conducting class one day a week for five weeks.”

In 2001, the church family sold the building on Ewart Drive to Grace Memorial Church for a community building and moved to a sanctuary on Lemington Avenue in East Liberty. The former ELCA congregation, Epiphany, was an aged, white congregation and believed that Faith would be a good fit for the changing population.

The members had lots of plans according to Pastor Niermann. They bought the brick home, the former Odell Robinson Funeral Home hoping to establish a day care center and a pre-school. Church leaders interviewed community officials; synodical direction became involved. But zoning complications and break-ins as well as the full-time job of property managing presented unknown challenges.

So, the congregation partnered with an outreach that was planted in the area many, many years before and offered the building for their use. They held dinners, and coat drives and Christmas parties with the people of the Nahbi Ministries but God called many of their members home and it became more and more tough to grow.

In November of 2019, they gifted the church to their outreach partners with the stipulation that they could continue to worship there and maintain an office and sold the other two buildings to a Vietnamese community group.

## HOUSES OF WORSHIP SERIES

Rev. Niermann has served them since 1991, fresh out of seminary. On June 23, he will celebrate 30 years of serving His Lord, devoted to this flock. He added the former St. Thomas in Northside congregation in 1993 and conducted a dual pastorship for the next 20 years “in an effort to enable the church to keep the ministry going,” he recalled.

A “fourth generation” minister, his great grandfather pastored in the “Holy Land” of Concordia, Missouri. The family migrated up the Mississippi from New Orleans. His grandfather was a district president and his father serviced congregations in Nebraska and Kansas. Pastor was raised in a small town near Omaha, one of five children. Two of his siblings are physicians.

Thanks to the late Rev. Richard Grammes, former pastor at St. John’s in Millvale and chaplain at Concordia, he was commissioned as an Air Force chaplain. Since 2006 he has served as a chaplain for Heartland Hospice. “It’s been a wonderful calling to minister to those who are dying,” he acknowledged. “The single difficulty is the documentation.”



*“Then we your people, the flock of your pasture,  
will give thanks to you forever; from generation  
to generation we will recount your praise.”*  
Psalm 79:13

Over the years two outreach projects that pinpoint the personality of the church are an active Gospel Choir that performed at many events in the spiritual and secular communities.

Pastor said, “The first year I served here, the synodical convention was held in Pittsburgh and our Gospel Choir performed as part of the schedule.”

A big part of our ministry in Schenley Heights was the food pantry,”

## HOUSES OF WORSHIP SERIES

President and Elder Eugene Burton “sang” his praises of Pastor Steve. “It’s the message and the messenger” the Penn Dot photo license technician declared. He joined the church through his grandfather as a teen but moved to Maryland with his father after his high school graduation. He returned home to help in the caregiving of his mother, Susan Johnson, better known as “Nana.”

He and his wife Linda have been stalwart workers for Faith. She is the financial secretary and Pastor convinced him to volunteer at the Sonshine Kitchen in McKeesport where he led every Monday devotions and served on the board under Barb Stuffer’s direction.

He calls Faith a family church and sites the former Gospel Choir as an example. “Our family composed the music ministry under the direction of organist Bernice Stewart.”

Lifelong member Bernice served in that capacity for 50 years and handed the role to her daughter, Betty Lynn Simms. Betty Lynn lives in York, PA with her daughter but has “rejoined” the Faith congregation via phone ministry.

“I loved my church,” and she and her mother were very active in the greater Lutheran community as officers of the LWML. She went to 7<sup>th</sup> and 8<sup>th</sup> grade at First Trinity in Oakland and followed her career path at Carnegie Library. She babysat Rev. Thomas Glammeyer three children in the early 1960s and named former pastors Rev. John Steiner, Rev. James Brown and Rev. Reholma McCants before he established Unity Community in Homewood.

“Faith in Schenley Heights was truly a community center,” she said. “The Girl Scouts met there, and I remember parking cars for Pitt football games as a fundraiser.”

The phone ministry has allowed me to re-connect with our oldest member Alfreda Prather, who at, 96 now lives in Evanston, IL with her daughter.

Where to next? Pastor Steve is thankful God has kept us together and said it is a great joy, an opportunity, a blessing to be at Faith for so long under the circumstances. Mr. Burton called on prayer to change things and imagination to make it work as long as we follow “One Lord, One Faith, One Baptism.”



## SCHOOL NEWS

### ZION LUTHERAN PRESCHOOL

*Bridgeville*

*Therefore, if anyone is in Christ, he is a new creation. The old has passed away; behold, the new has come. 2 Corinthians 5:17*

The butterfly has long been a Christian symbol that reminds us of the new life we have through Christ's death and resurrection. During STEM time, the children have been learning all about the life cycle of a butterfly. Each class received a cup of painted lady caterpillars (larva) to observe. Our little scientists watched them move, eat, and grow. They made daily observations and recorded their growth.

The children learned that there are three body parts of an insect: the head, thorax and abdomen. They even learned a song to remember the body parts sung to the tune of "head, shoulders, knees and toes, knees and toes" but sang "head, thorax, abdomen, abdomen". They also enjoyed learning some fun facts about the Painted Lady butterfly; she lays up to 500 eggs, lives 2 to 4 weeks, flies up to 1000 miles in her lifetime, and tastes with her feet!

To finish the lesson, they acted out the four stages of a butterfly: egg (4 days), caterpillar (7 to 10 days), chrysalis (7 to 10 days), and then a beautiful Painted Lady butterfly.

Here's some photos of the children making their observations.





## SCHOOL NEWS

### GOOD SHEPHERD CHRISTIAN PRESCHOOL

*Pittsburgh (Whitehall)*



Just like that, it's the end of the school year! This was definitely not like any other school year, but teachers and students made it through and came out stronger. Activities and family involvement looked different, but we were still able to celebrate special events.

The month of May was filled with class activities including field trips, Mothers' Tea Parties, Dads and Donuts, a Food Truck Festival, end-of-year class picnics, and of course Preschool Graduation.

We are looking forward to next year, enrolling more students and offering additional classes again as we continue to move forward through the challenges of the pandemic. The Lord

blessed our school this year when we were able to open and provide a service to our community, and we can't wait to see what the 2021-2022 school year brings.

If you have questions about the Preschool or are interested in registering your child, contact the Director, Ashley Miller at [preschool@goodshepherdpittsburgh.org](mailto:preschool@goodshepherdpittsburgh.org) or 412-884-5960.

### ST. JOHN'S LUTHERAN PRESCHOOL

*Millvale*

St. John's Preschool in Millvale is seeking a teacher, part-time, starting in mid-August, working three days per week. BA or BS in education with prior teaching experience is preferred.

Please send resume to [Preschool@StJohnsMillvale.org](mailto:Preschool@StJohnsMillvale.org)



## SCHOOL NEWS

### REDEEMER LUTHERAN SCHOOL

*Oakmont / Penn Hills*

Track and field season is in high gear! As of this writing, the Redeemer track team has earned some impressive stats, including personal records for many students and a 2<sup>nd</sup> place finish for the high school boys' team in the SWCAC meet at Geneva College. The team is working hard to prepare for the final competitions this month, including a chance for some athletes to participate in regionals!

Aaannndddd... that's a wrap! After a year's delay, and many weeks and months of work and creativity, Redeemer presented the musical *Annie* in April. Cast and crew families were able to attend the show in person; families and friends were able to enjoy the performance in the comfort of their own homes, thanks to digital streaming. We are proud of all of the hard work of our students, faculty, staff, and families to make this year's performance possible!

Redeemer will once again be holding summer camp. Sessions are available from June 21<sup>st</sup> to August 2<sup>nd</sup> for K-8<sup>th</sup> grade students, with different themes every week. Children may register to attend by the week or by the day. For more information, visit us online at [rlspittsburgh.org](http://rlspittsburgh.org) and click on the Summer Camps button.

RLS is open for tours and enrollment! For more information, please contact Alison Jackson at [admissions@redeemer-oakmont.org](mailto:admissions@redeemer-oakmont.org) or 412-793-5884.

Pictured bottom left: The RLS cast and crew of *Annie*.

Bottom right: Junior Christian Loewe earns numerous awards at the SWCAC track and field meet at Geneva College



**ASCENSION LUTHERAN CHURCH**

*McCandless*

Join the fun in the sun with Mystery Island Vacation Bible School (VBS) at Ascension Lutheran Church (8225 Peebles Road, Pittsburgh, PA 15237)!



Is there just one God? . . . Who is God? . . . What is God like? . . . Does God love me? . . . Can I know God? Our kids grapple with questions like these every day. At Mystery Island, we'll uncover the truth about our Creator God! There's a sea of confusion about who God is and what He's like, so we'll track down the one true God and learn how amazing He is through the pages of Scripture.

Grab your sunscreen and get ready for a taste of paradise as you track down the one true God at Mystery Island on July 12-15 from 6:00 p.m. - 7:30 p.m. For more information, please contact [vbs@ascensionpgh.com](mailto:vbs@ascensionpgh.com).

**CONCORDIA LUTHERAN**

*Brentwood*

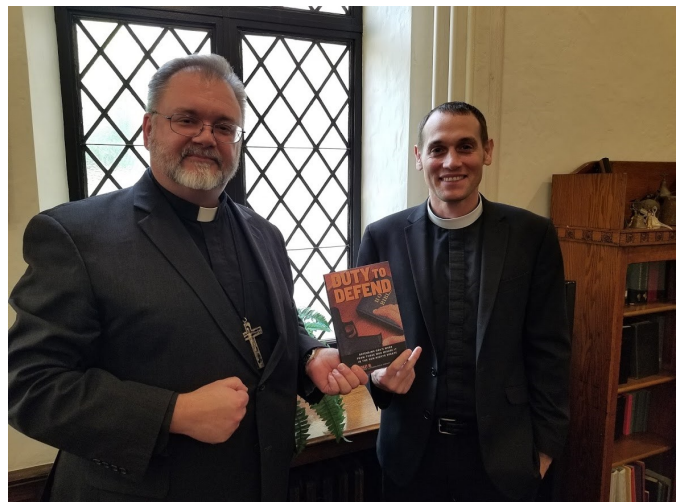


Concordia has established a 100th Anniversary Fund, in anticipation of the related celebrations that are now just 2+ years away. We're always looking for historical memorabilia and pictures, which - if you're loathe to part with - we'll happily accept pictures and scans of as well. If you or loved ones were once a member here, let us know what you have, as we'd love to add it to our collection!

We're now looking at re-painting our Sanctuary - possibly before this summer. This too is exciting, as we know it's been at least 40, and possibly 60 years, since it was last done!

We recently had a Men's Outing to see "Godzilla vs. Kong." Pictured from left to right are Zachary McCandless, Pr. McCandless, Steve Zeybel, John Toperzer, and Dan Melzner. Thankfully, we had the theater to ourselves, much popcorn was consumed, and the fellowship was great! We'd never done something like this before, but as things return to normal, who KNOWS where Concordia's men may turn up NEXT!

Pr. Bob McCandless, poses with Pr. Gavin Mize (Augustana LCMS - Hickory, NC) and the book which we were recent contributors to - "Duty to Defend." Pastor Mize was the guest speaker at our Pittsburgh Pastoral Conference in May, and - interestingly enough - we both hail from the same hometown of China Grove, NC.



**MT. CALVARY LUTHERAN**

*West View*

May 2 - Cantate Sunday. A day for music, and that's exactly what took place during the service at Mt. Calvary in West View. Along with the selected hymns and liturgy for the congregation, the bell choir performed "Joyful, Joyful We Adore Thee" and the "Doxology". The voice choir sang "Cantate Domino," "I Will Sing Unto You," and "The Lord's Prayer." It was a beautiful representation for the day.

A few weeks prior, members of Girl Scout Daisy Troop 52841, which has been meeting at Mt. Calvary in West View, picked a nice day and planted flowers outside the church that had been donated by people who purchased them to decorate the altar on Easter.



## GOOD SHEPHERD LUTHERAN CHURCH OF SOUTH HILLS

*Pittsburgh (Whitehall)*

Good Shepherd has been in a vacancy since the end of October 2020 when Pastor Bickel retired. As we patiently and prayerfully undergo the call process, we are now blessed with the guidance of Pastor Barry Keurulainen as our Vacancy Pastor. We are trusting God's plan and His timing to identify a new pastor for Good Shepherd as leadership continues to move the church forward in worship and study, encouraging congregational cohesiveness and communication.

And the excitement is brewing at Good Shepherd because **VBS** is back! Everyone was disappointed that we weren't able to get together last year, but we are excited to be holding in-person VBS this year and we are looking forward to a wonderful experience! We'll be taking a ride on the **Rocky Railway**, learning how Jesus' Power Pulls Us Through! The theme is so relevant given the circumstances of the last year and a half. Where there are struggles, uncertainties, sadness, or loneliness, we need only look to Jesus to provide hope in the midst of the storm.

Online registration is open and [accessible via our website](#). Due to safety precautions, we are capping attendance at 70 children and walk-ups will not be accepted. So get pre-registered and join us for a week of laughter and praise, June 21-25 from 9:00 a.m. to 12:00 p.m., 418 Maxwell Drive, Pittsburgh, PA 15236!

## ST. JOHN'S LUTHERAN

*Clarksburg*



### New Pastor for St. John's

St. John's Evangelical Lutheran Church in Clarksburg, WV, one of our region's new mission congregations and one of only 5 LCMS congregations in the entire state of West Virginia, is receiving a new pastor. Stanley Lacey, a fourth-year seminarian at Concordia Theological Seminary in Fort Wayne, IN, was assigned to be the congregation's pastor at the annual call service at that seminary on Tuesday, April 27.

Pastor-elect Lacey follows Pastor Amadeus Gandy, who left St. John's in October to serve as a full-time chaplain in the United States Air Force in Alaska. A native of Alabama, he has a BA in Music (Minor: History) from the University of Alabama. He grew up a Roman Catholic but became a Missouri Synod Lutheran while courting his wife Payton. They were married in 2015 and currently have three children. He vicared last year at Zion Evangelical Lutheran Church in Imperial, NE.

The Lacey family looks forward to becoming part of their new community, enjoying the beauty of West Virginia, and getting to know their new church family. He is excited to begin serving the people of St. John's and reaching out to this region of West Virginia with the Holy Gospel and Christian love. He earnestly desires your prayers as he begins the work that our Lord Jesus has given him to do as a minister in the one, holy, catholic, and apostolic Church.

Pastor-elect Lacey will be ordained and installed as Pastor of St. John's Church in Clarksburg, WV by Bishop Hardy on Tuesday, June 15, at 6:00 p.m. We do hope you will be able to attend. Please pray for Pastor-elect Lacey and his little flock and their mission. We also strongly encourage you to please consider supporting this work with your offerings as well. St. John's is located at 125 Meigs Ave in Clarksburg. (Mail to P.O. Box 709, Clarksburg, WV 26302).

**TRI PARISH**

*Bethel, Zion and St. John's, Millvale*

**PASTOR-ELECT DONN WOOLWEBER**

Born in Wisconsin, Vicar Woolweber, at age four, planned to be a doctor. His pastor told him in 8th grade he would make a fine Lutheran minister. When he was 17, he went on tour with the Brothers and Sisters as the youngest singer, dancer and actor. Three years later he was married and over the next 30 years his career was rooted in music education as a high school music director and principal as well as the high school football head coach, basketball referee, professional emcee, stage, film, television and radio personality.

Having graduated from University of Wisconsin with a BFA, he earned an MS at Cardinal Stritch University where he then served as an adjunct professor and the director of vocal music. Donn and his first wife had a daughter Amie who is now 40 and a son Eric, age 34.

In 2005, he moved to California where he landed a co-starring role in a movie and found a church where he met Debbie. They married in 2010 and together continued the classical and educational theatre company "Shakespeare At Play" that Debbie had founded where they wrote curriculum for Los Angeles Unified School District and the Clark County School District in Las Vegas. Until 2017, they were also caregivers for Debbie's mom and another 90+ year old. Both have performed in professional live theatre, film, television, and radio but also made their marks in sports and athletics.

Despite this circuitous path, God led them to Concordia Seminary St. Louis to become an LCMS pastor and "work for the greatest employer in the universe."

So thankful for the special gift  
of having a pastor who reflects the love of Jesus.

— ◆ —  
*God Bless You*  
IN YOUR MINISTRY  
— ◆ —

YOU ARE INVITED TO THE WORSHIP SERVICE FOR THE  
ORDINATION & INSTALLATION OF

---

*Pastor-Elect Donn Woolweber*



---

**SUNDAY, JUNE 6 – 3 P.M.**  
ZION EV. LUTHERAN CHURCH  
237-37<sup>TH</sup> STREET, LAWRENCEVILLE

**DINNER RECEPTION – 5 P.M.**  
BETHEL EV. LUTHERAN CHURCH  
301 SCOTT AVENUE, GLENSHAW

PLEASE RSVP FOR DINNER BY CALLING 412/486-5777 BEFORE JUNE 1.

Pastor-Elect Woolweber will be serving both Bethel and Zion Evangelical Lutheran Churches.

## UPCOMING SPECIAL EVENTS

### Concordia Lutheran Ministries

Sunday, July 25 marks the 140th Concordia Summer Festival, with a picnic lunch served at 12:30 p.m. and entertainment by the Pittsburgh Doo Wop Big Band beginning at 1:30 p.m. At 4:00 p.m. the traditional worship service will be held with Concordia Chaplaincy Director Rev. Jack Hartman giving the sermon. A car cruise will be on-site from 12:30 p.m. to 3:00 p.m. A mini fishing derby for kids 12 and under will highlight the children's activities beginning at 12:30 p.m. Crafts and games at the pavilion will keep the kids busy for the rest of the day, and they are entitled to one free drink and one free food item from our quick food tent, such as a burger, hot dog or chicken tenders. The entire event is open to the public, and admission is free.

Good Samaritan Hospice, a mission of Concordia, is hosting two memorial services and butterfly release events to honor and celebrate the memory of loved ones who have passed. The first event will be held Sunday, August 15 from 2:00 p.m. to 4:00 p.m. at Mt. Zion Baptist Church, Mt. Zion Baptist Church Rd., Franklin Township, PA 16052 on Lake Arthur (near Moraine State Park). Limited seating will be available in the sanctuary; the service will also be broadcast via speakers outside. The second memorial event and butterfly release will be held Saturday, August 21 from 2:00 p.m. to 4:00 p.m. at Concordia at Villa St. Joseph, 1030 State St. Baden, PA 15005. The event will be held outdoors in front of the building. Both events are free to attend, with butterflies to be released at \$10 each. Registration for each event will begin at 1:30 p.m. Walk-ups are welcome, but registration is encouraged by July 1, to guarantee a butterfly. To register for either Good Samaritan Hospice events, call 724-352-1571, ext. 8355.

Details: Concordia Hospice of Washington (CHOW) will host the 4th Annual Memorial Butterfly Release in memory of those who spent their final days under our care. The event will be held on August 28 from 2-4 p.m. at the Barn at Ike's Place, 80 Ike's Rd., Amity, PA 15311. The event is free to attend, with butterflies to be released at \$10 each. Walk-ups are welcome but pre-registration is highly encouraged by July 16 to guarantee a butterfly. All proceeds benefit our mission to provide care and offer emotional, social and spiritual support for our patients and their families. To register or receive more information, call 724-250-4500.

Concordia at Cabot will continue its Summer Concert Series this year with a selection of performances guaranteed to get your feet tapping. All concerts begin at 4 p.m. and are free of charge. Tours of the campus will be available before and after each performance.

Sunday, June 6 – East Winds Symphonic Band

Sunday, July 18 – Penn Trafford Community Band

Sunday, August 8 – The Gibbons Band

Sunday, September 12 – 56 East Band

The concerts will be held rain or shine – they are scheduled to take place on the Haven II patio but will be moved to the Haven I dining room if inclement weather occurs. Food trucks will be on-site for every concert, weather permitting. Walk-ins are welcome, but registration is strongly encouraged. To reserve your seat, call our Admissions Director Peggy Trettel at 724-352-5378 or email at [PTrettel@concordialm.org](mailto:PTrettel@concordialm.org).



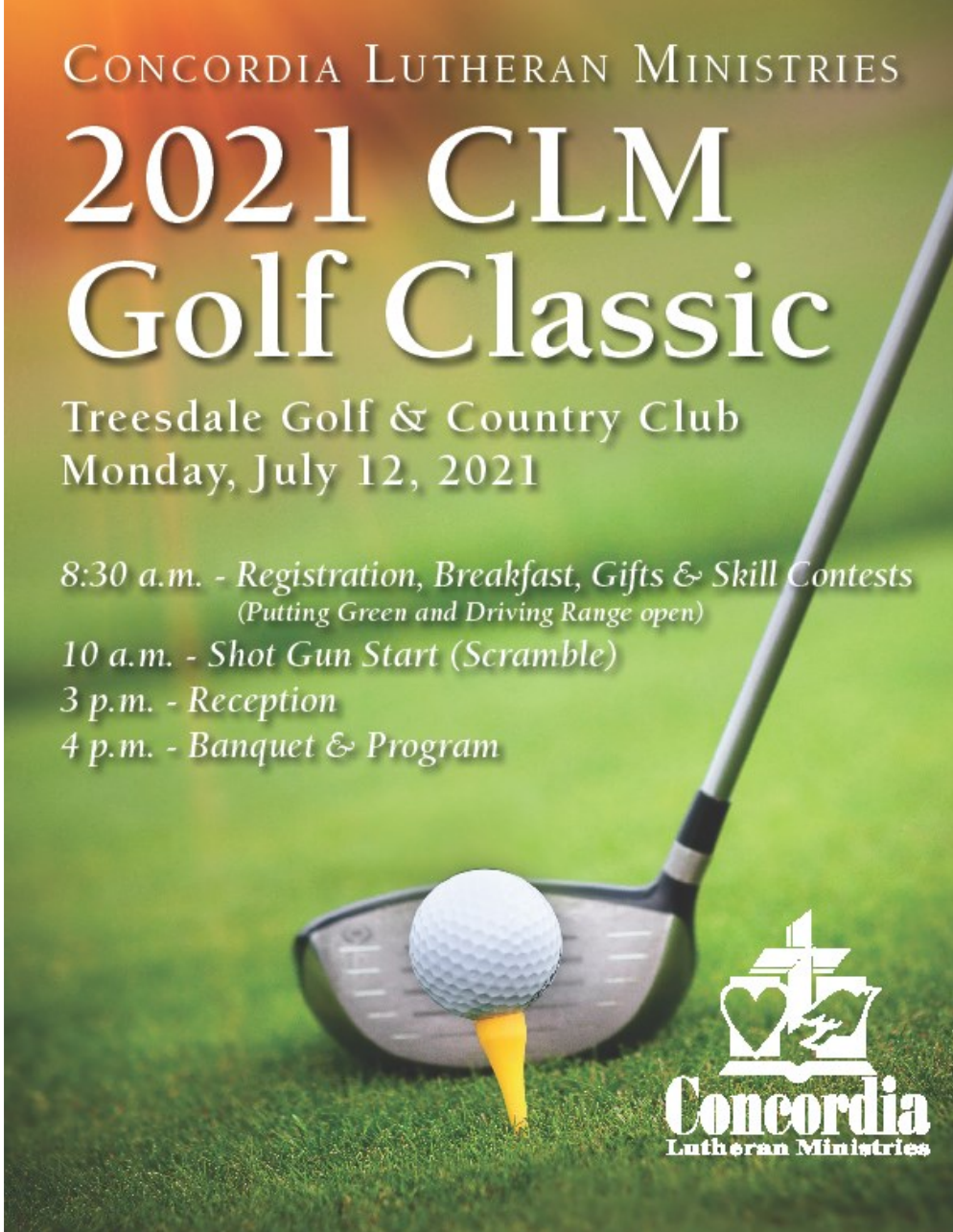
## CLM Golf Classic

At Concordia Lutheran Ministries, we truly do put our *Faith in Caring*. For 140 years, Concordia has faithfully served and trusted God so that it may best serve others. This year is no different, even after an endless year of turmoil due to the global pandemic, we continue to look toward a hopeful future.

With that sentiment in mind, it is still full steam ahead with our biggest fundraising event of the year – our **Annual CLM Golf Classic**. This event supports our Good Samaritan Endowment Fund, Concordia's benevolent care fund which ensures our quality, Christian care won't stop even after a patient's ability to pay does. In our 2020 fiscal year, Concordia provided more than \$12 million in charitable care to over 550 residents and patients.

We are excited to return to Treesdale Golf & Country Club on Monday, July 12, and we have got something for every interest and budget level. We will, of course, be following all mandates from national, state and local legislature and operating in compliance with the Centers for Disease Control and the PA Department of Health.

Please contact the CLM Foundation, at (724) 352-1571 ext. 8363 or [giving@concordialm.org](mailto:giving@concordialm.org) if you have questions or need assistance. We look forward to partnering with you on another great day for our mission.

A promotional poster for the 2021 CLM Golf Classic. The background is a blurred green golf course with a golf club and a white golf ball on a yellow tee. The text is white and centered. At the bottom right is the Concordia Lutheran Ministries logo, which features a stylized building with a heart and a hand holding a cross.

CONCORDIA LUTHERAN MINISTRIES

# 2021 CLM Golf Classic

Treesdale Golf & Country Club  
Monday, July 12, 2021

8:30 a.m. - *Registration, Breakfast, Gifts & Skill Contests*  
*(Putting Green and Driving Range open)*

10 a.m. - *Shot Gun Start (Scramble)*

3 p.m. - *Reception*

4 p.m. - *Banquet & Program*

**Concordia**  
Lutheran Ministries



# 17<sup>th</sup> Annual CLM Golf Classic

## Sponsorship & Participation Form

Monday, July 12, 2021 – Treesdale Golf & Country Club – 10:00 a.m. Start

### CONTACT INFORMATION

Organization Name\*: \_\_\_\_\_

*\*as you would like it to appear on promotional materials, website, program, etc.*

Contact Person: \_\_\_\_\_

Email: \_\_\_\_\_ Phone: \_\_\_\_\_

Address: \_\_\_\_\_

City: \_\_\_\_\_ State: \_\_\_\_\_ Zip: \_\_\_\_\_

Signature: \_\_\_\_\_ Date: \_\_\_\_\_

### CHOOSE YOUR PARTICIPATION LEVEL:

\_\_\_\_\_ Platinum Sponsor (\$7,500)

\_\_\_\_\_ Gift Sponsor (\$5,500)

\_\_\_\_\_ Gold Sponsor (\$5,000)

\_\_\_\_\_ Golf Cart Sponsor (\$3,500)

\_\_\_\_\_ Banquet Sponsor (\$3,500)

\_\_\_\_\_ Shirt Sponsor (\$3,000)

\_\_\_\_\_ Social Hour Sponsor (\$2,500)

\_\_\_\_\_ Refreshments Sponsor (\$2,500)

\_\_\_\_\_ Breakfast Sponsor (\$2,000)

\_\_\_\_\_ Practice Range Sponsor (\$2,000)

\_\_\_\_\_ Contest Hole Sponsor (\$1,500)

\_\_\_\_\_ Silent Auction Sponsor (\$1,000)

\_\_\_\_\_ Green & Pin Sponsor (\$800)

\_\_\_\_\_ Teebox Sponsor (\$450)

\_\_\_\_\_ Golfer Package at \$225 each = enclosed amount of \$ \_\_\_\_\_

### IDENTIFY YOUR GOLFER(S) AND SHIRT SIZE\*

**(\*for ONLY CERTAIN sponsor levels as outlined on full-page flyer)**

Golfer 1/Cart 1 (Captain) \_\_\_\_\_ Shirt Size \_\_\_\_\_

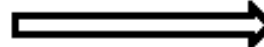
Golfer 2/Cart 1 \_\_\_\_\_ Shirt Size \_\_\_\_\_

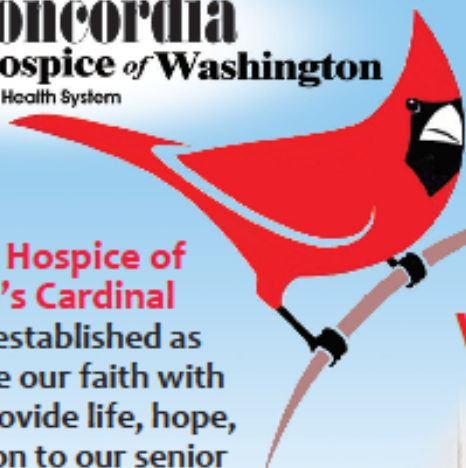
Golfer 3/Cart 2 \_\_\_\_\_ Shirt Size \_\_\_\_\_

Golfer 4/Cart 2 \_\_\_\_\_ Shirt Size \_\_\_\_\_

**SUBMIT YOUR LOGO AND/OR ADVERTISEMENT BY JUNE 11, 2021**

*More on reverse side*





# Cardinal Project

**Concordia Hospice of Washington's Cardinal Project** was established as a way to share our faith with others and provide life, hope, and restoration to our senior friends living in long-term care facilities by gifting them bird feeders.

**Would you please help?**



Many of our friends who are living in local long-term care facilities have not been able to see their families for quite some time due to the pandemic, which unfortunately has taken a toll on their emotional health and well-being. It has long been said that bird watching can positively impact an individual's physical, mental and emotional health, and the sport is also a great cognitive stimulant.

**Please join us in helping our senior friends enjoy the beautiful sights and sweet melodies of bird watching by considering a donation of a bird feeder of \$25 and under.**

The Concordia Hospice of Washington team will collect all donations, supply the feeders with seed and deliver to local long-term care facilities. Each donation will include a gift tag noting that the gift is from a special friend – you can choose to include your name or donate anonymously.

### How to Donate:

We have made this donation process simple and we will walk you through each step of the way!

Visit [www.ConcordiaCardinalProject.org](http://www.ConcordiaCardinalProject.org) to learn more about the project and pick the donation method that works best for you OR call our Marketing Liaison, Shilynn Renner, at 724-250-4500 Ext. 2118 for more information!



10 Leet Street • Washington, PA 15301  
 Local: 724-250-4500  
[www.concordiahw.org](http://www.concordiahw.org)

If you're taking care of someone who is seriously ill, please visit: [www.seriousillness.org/washington](http://www.seriousillness.org/washington)